

a)



b)

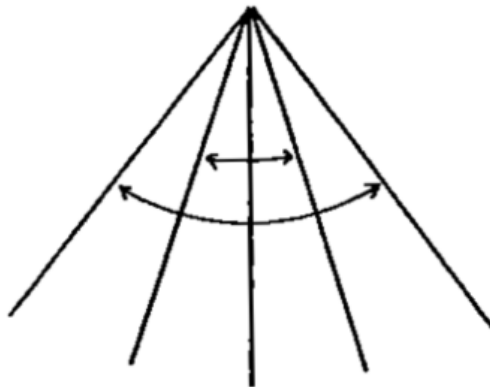


Fig. 1: Approximate ray tracing scheme. (a) Circular paths of varying radii of curvature are constructed. (b) The plane containing the ray is systematically rotated about the source-receiver axis. The path with the shortest travel time is adopted as the best estimate of the ray path (from *Thurber, 1983*).

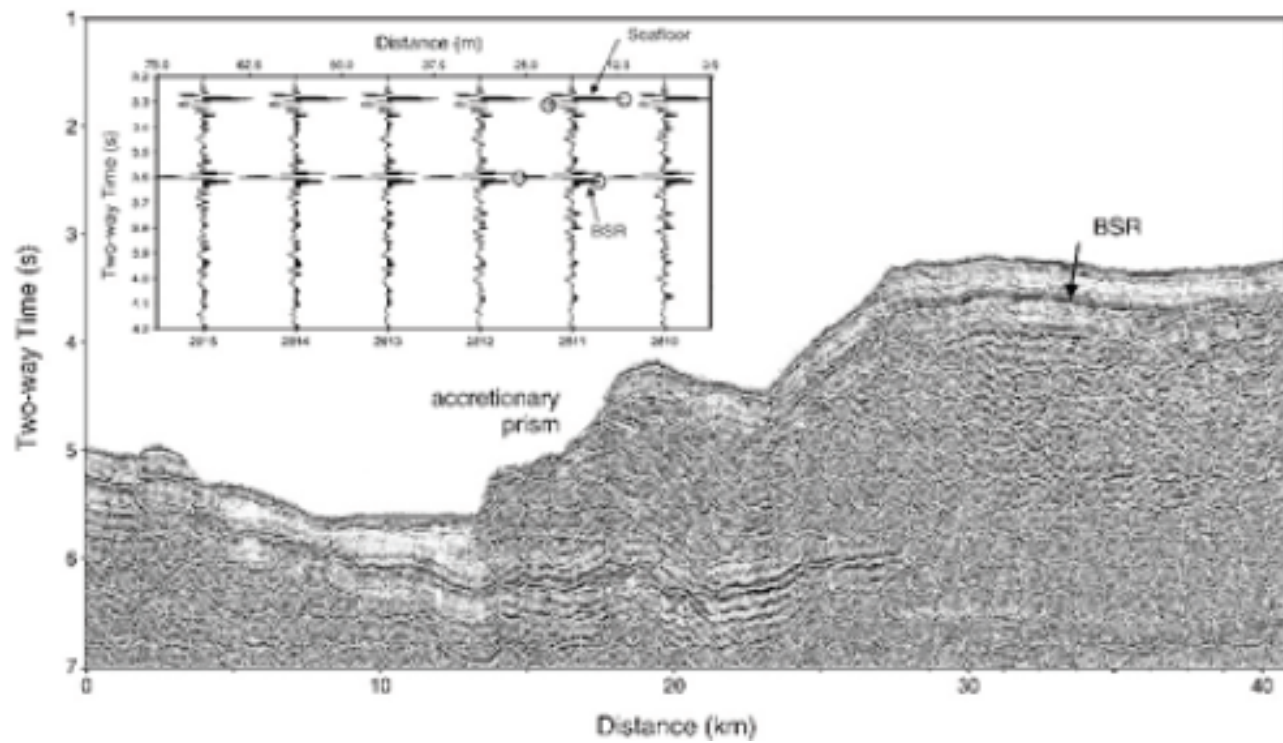


Fig. 2: Seismic profile off Mexico showing hydrate "bottom simulating reflector".  
Source: *National Oceanography Centre, Southampton, U. K.*

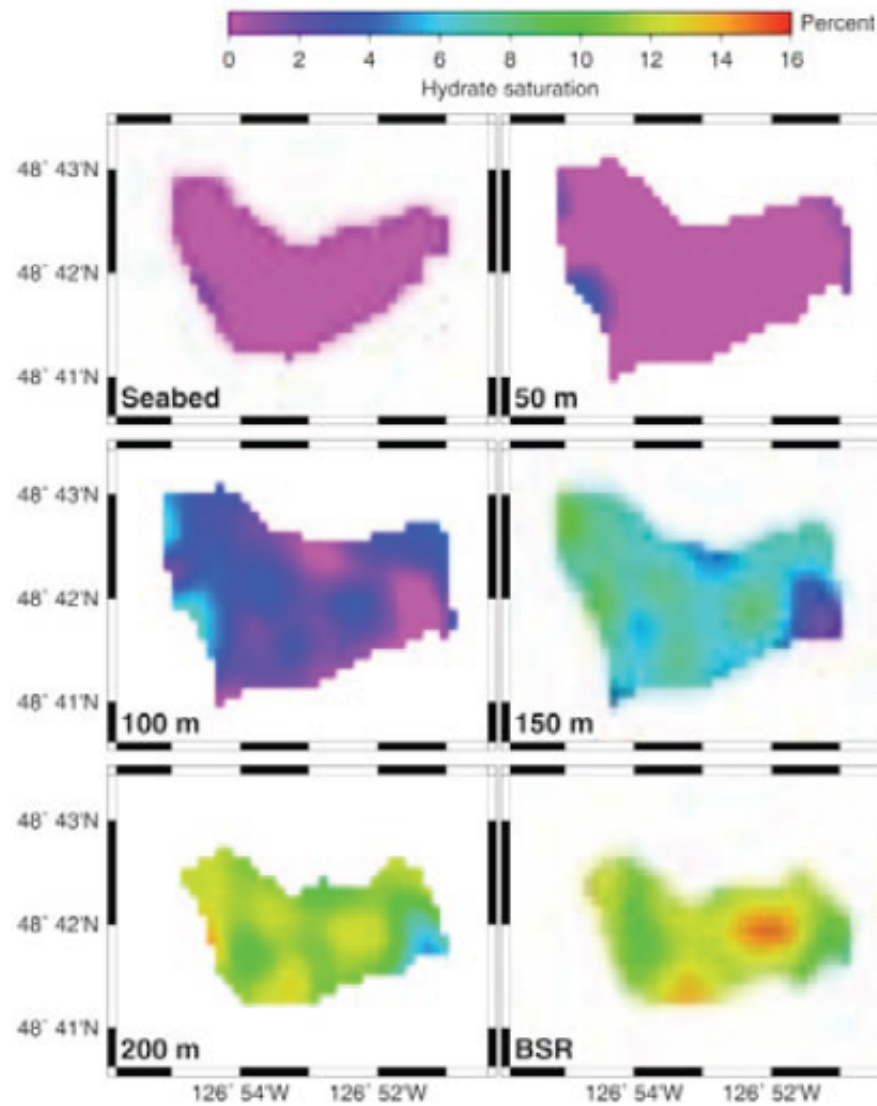


Fig. 3: Hydrate content derived from seismic tomography off western Canada.  
Source: *National Oceanography Centre, Southampton, U. K.*